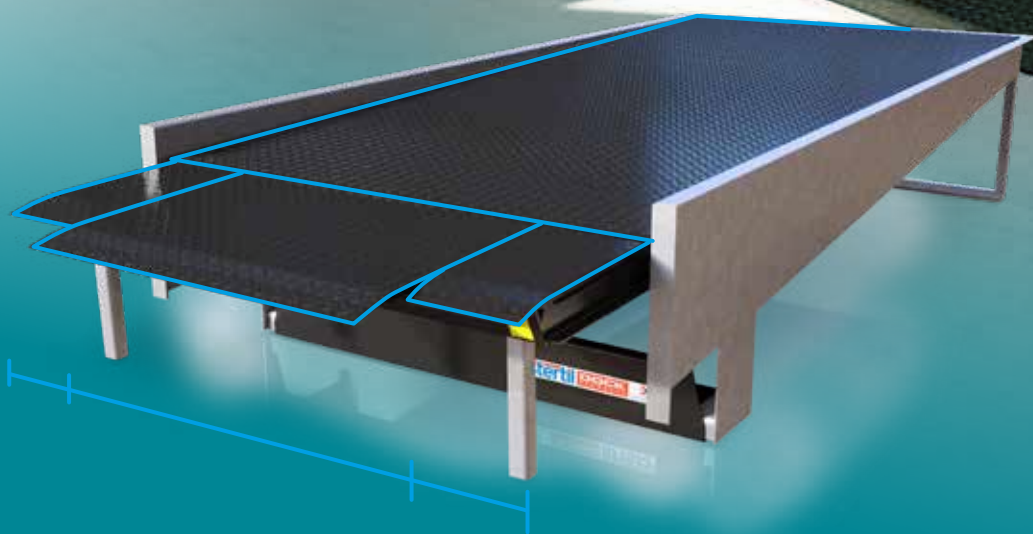


sterili[®] **POOCK**
P R O D U C T S

VARIFLEET[®]

THE FLEXIBLE AND VERSATILE LEVELLER



VARIABLE TELESCOPIC LIP LEVELLER

BE THE SPECIALIST | STAY FOCUSED | SHAPE THE FUTURE



International Specialist in Safe, Superior Quality Loading & Unloading Solutions

Steril Dock Products provides quality, customised and technically advanced loading bay dock equipment solutions throughout the world. These superior solutions are designed, developed and manufactured in-house by a team of specialists with expertise in the loading bay equipment industry.

Steril Dock Products is represented internationally by local sales organisations, exclusive distributors and a network of qualified Steril Dock Products service partners. Steril Dock Products is the No. 1 safety and quality specialist in loading bay dock equipment. A whole array of patented products is a result of more than 45 years of experience and a continued commitment to ensuring safety in and around the loading bay.



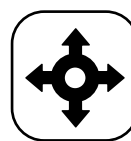
FOR BOTH VAN

The very safe and extremely flexible VARIFLEET® leveller does its name justice. It provides a very versatile and cost effective solution for a wide variety of distribution centres and warehousing facilities, and for a wide fleet of vehicles.

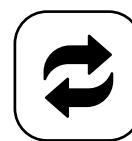
We recommend that there should be at least one VARIFLEET® leveller built into your distribution centre or warehousing facility. Why? Ideal for a broad fleet of vehicles that can be loaded and unloaded cost effectively for



Safety



Versatile



Replacement



6-8 Tons

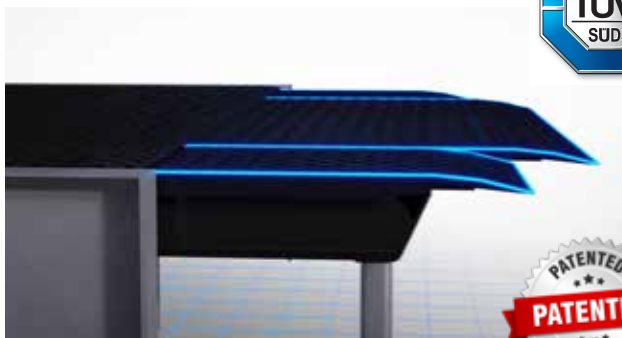
 **VARIFLEET**



S & COMMERCIAL VEHICLES

increased productivity. The VARIFLEET® is a self-adjusting weight pressure compensation telescopic lip leveller for vans and both light and heavy weight commercial vehicles.

The durable and cleverly engineered Stertil® Hydraulic system with built-in pressure compensation prevents damage caused by overloading and provides a smooth transition during the loading and unloading process.

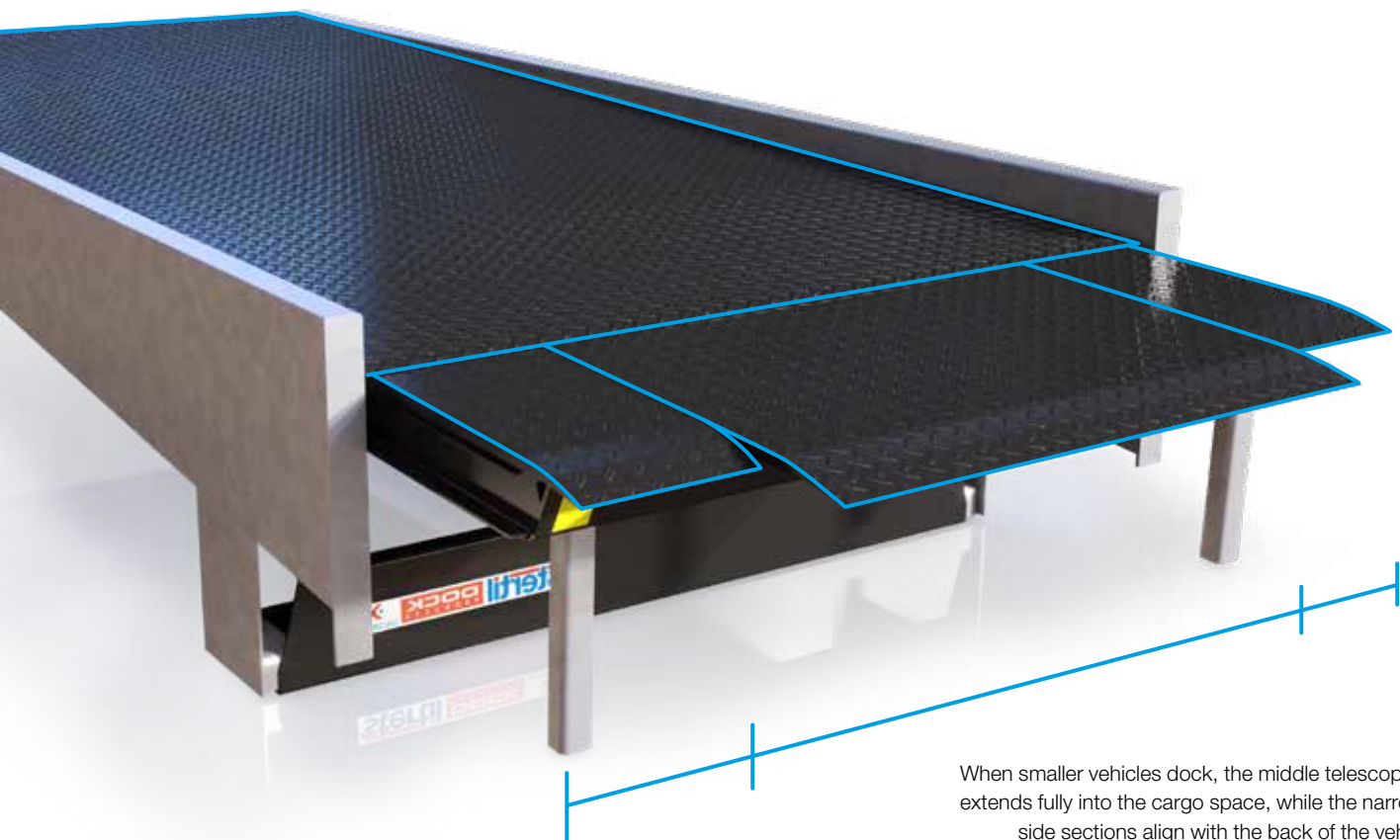


Variable lips



- Versatile, can be adjusted according to vehicle size and height of loading bay floor.
- Cost effective, maximum productivity for fast turnaround of deliveries.
- Safe and ergonomical design.
- Prevents wear and damage to material handling equipment and the vehicle floor.
- Suitable for all building situations and vehicles.
- Durable sturdy construction and complete programmable Stertil® Controls.
- TÜV SÜD and according to EN 1398:2009 Dock Levellers Safety Requirements.

ULTIMATE FLEXIBILITY



When smaller vehicles dock, the middle telescopic lip extends fully into the cargo space, while the narrower side sections align with the back of the vehicle.

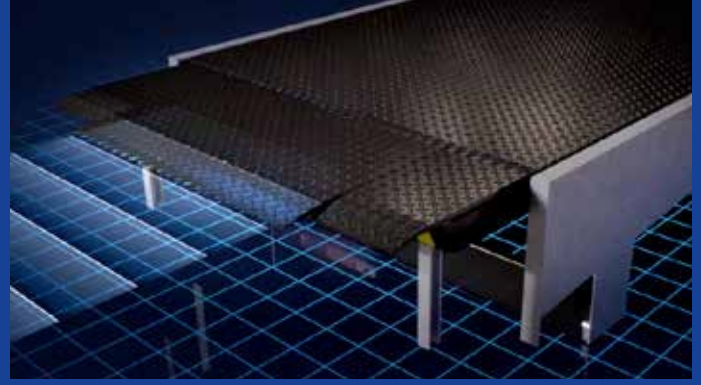
The modern day distribution centre or warehousing facility needs to handle all of the current demands of an exponential increase in on-line consumer shopping. Home delivery is usually done using parcel and city vans whilst the goods are brought to the distribution centre with large articulated commercial vehicles. This diversity requires flexibility from the distribution centres, the loading bay and the levellers.

Automatically Adjustable Telescopic Lip

The especially designed VARIFLEET® telescopic lip adjusts automatically in height, width and length. For large commercial vehicles, the VARIFLEET® extends to the normal width of 2,000 mm. For smaller vehicles such as vans, the telescopic lip extends

and the side sections of the VARIFLEET® also extend only to fill the gaps. The lip extends to a width of maximum 1,250 mm. This means that the lip always fits even when the floor of the van is narrower than normal. Ideal in terms of accessibility and optimal loading for example, with end-loads for parcel vans.

The steel side lips of the VARIFLEET® are flush with the vehicle floor and ensure a completely safe platform transition. Unlike many other variable levellers, the platform and the lip of the leveller are obstacle-free, safe and provides a smooth ergonomic minimum impact and trip-free transition.



Variable telescopic lip



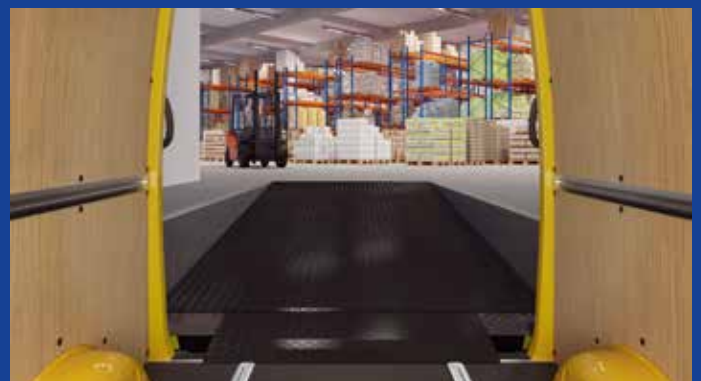
Safe, obstacle-free and no gaps



Hard-wearing deck from one piece of high Tensile steel



Hydraulic weight pressure compensation up to 150 kg



Flush with the floor

CROSS-DOCKING: BUILT-IN WEIGHT PRESSURE COMPENSATION

The built-in smart Stertil® Hydraulic weight compensation system ensures that the VARIFLEET® leveller automatically adjusts quickly and effectively between parcel vans and commercial vehicles. During the loading process the system detects the pressure on the leveller platform and cleverly adjusts the downward forces up to 150 kg. This reduces the weight burden created by the movement of the leveller on the floor of the docked vehicle. For vans and other light weight vehicles it helps prevent damage to the vehicle's suspension. This weight pressure compensation also ensures that the lip rests very stably on the vehicle floor.

- Prevents damage to light vehicles and vans.
- Smart Stertil Weight Compensation Protection System up to 150 kg.
- Stable and smooth drive-on.
- Dynamic capacities of 6 and 8 tons as with the X-Series Telescopic Lip Levellers.
- Versatile and flexible automatically controlled lip widths from 1,250 mm – 2,000 mm.
- Cost effective (no extra construction work) and maximum productivity.

TOTAL VARIABLE CONTROL



Control Box VARIFLEET®



The VARIFLEET® Control box is very compact and intuitive. When in the parked position the leveller is suitable for commercial vehicles and the lip will extend to the standard width of 2,000 mm. When pressing the LED Button it lights-up and the smaller lip programme for vans and light weight vehicles is activated. The middle part of the lip will extend according to the length and height of the vehicle and the width automatically extends to 1,250 mm. The side sections of the VARIFLEET® are also activated in order to fill the gaps for maximum protection and prevention of anything from falling through the gaps.

The VARIFLEET® lip after use automatically returns to fully extended width position, and the LED Button is no longer lit.

For complete integrated controls the Steril Dock Products Multi-Control (SMC) is recommended. This all-in-one control console allows the operation of the VARIFLEET®, the dock shelter and the door from one control box.



EXTREMELY DURABLE AND RELIABLE

As with all of Stertil Dock Products levellers, the VARIFLEET® is manufactured from high quality steel with a galvanised frame and components. The platform and lip are coated in a very durable anti-corrosion coating and are hard-wearing. The reliable and durable Stertil Hydraulic system with 1-cylinder is engineered for perfect stability and less defects than conventional 2-cylinder systems.

Safety above all

- Tested 25 % beyond the standard cycle requirements >40,000 cycles.
- TÜV SÜD and according to EN 1398-2009 Dock Levellers Safety Requirements.
- Optimal safety for warehouse personnel.
- Maximum flexible versatility for a wide range of vehicles.
- Damage prevention and replacement of material assets.

VARIFLEET® ... Variable possibilities

- Dynamic Capacities:
 - 2 tons (Vans and light weight vehicles)
 - 6 tons & 8 tons (Commercial Vehicles)
- Length 4,500 mm, Height 950 mm
- Lip Length 1,000 mm
- Width of 3-Sectional Lip:
 - Nominal 2,000 mm
 - Mid-Section Lip 1,250 mm
 - Side-Sections 350 mm
- High Quality Steel Platform & Tear Plate Lip with Anti-Corrosion Coating
- Galvanised Frame and Other Components
- Stertil® Hydraulic System

TECHNICAL SPECIFICATIONS

Length (total):		4,500 mm
Height:		950 mm
3-Section Lip:	Standard Width:	2,000 mm (Commercial vehicle floors)
	Mid-Section:	1,250 mm
	Side-Section:	350 mm
Lip Length:		1,000 mm
Dynamic Capacity:		6 and 8 tons for Commercial Vehicles 2 tons for Vans and light weight vehicles
Working Ranges:	Above Dock:	500 mm
	Below Dock:	690 mm
Material		
Deck:		High Quality Tensile Steel and Tear Plate Surface. 6 and 8 tons model tear plate surface 8/10 mm. Suitable for 3-wheel forklift trucks.
Lip:		Tear Plate Surface 15/17 mm. Deck and front angle are RAL 9011 - Black. Standard protection anti-corrosive coating and paint finish of 80 Microns (coating total thickness). Special colours are available upon request and at a surcharge.
Frame & Components:		Galvanised Steel
Frame Types:		Cast-in / Quick Mounting System (QMS) / Closed-Pit Standing
Stertil® Hydraulic System		
Central Main Cylinder Front-mounted		
Fully Controllable Lip		
Closed Rear Hinge		
Standard with Cross Traffic Legs		
Stertil® Standard Control (SSC) for VARIFLEET® with LED Press Button		

Options

- Stertil® Multi-Control
- Draught-excluding brush or rubber seals between the platform and loading bay wall.
- Extra noise reduction (10dB) and anti-slip coating for platform and lip, suitable for warehouse trolleys.

Please refer to the Installation and or Operations Manuals for detailed information and specifications. This product and all other Stertil® products are protected by patents from various regions and countries. For more information please refer to: www.stertil.com/en/patents/. All rights reserved.

Further Information

For more specific information or advice about the VARIFLEET® or any of the other quality products manufactured by Stertil Dock Products, please contact us.



Stertil B.V.
P.O.Box 23
9288 ZG Kootsterille
The Netherlands
Tel. +31 (0)512 334444
www.stertil-dockproducts.com
dp@sterdil.nl

Stertil Dock Products Stertil Dock Products
 Stertildock

member of Stertil Group